

R2E R3E R4E R5E R6E R7E R8E R9E R10E R11E R12E R13E R14E R15E R16E R17E R18E R19E

T28N T27N T26N T25N T24N T23N T22N T21N T20N T19N T18N T17N

# Snohomish

**UTILITIES AND TRANSPORTATION COMMISSION**  
**WASHINGTON STATE SOLID WASTE CERTIFICATE AUTHORITY**  
 January 2005

Rabanco LTD; Rabanco Connections International, Inc.  
 Certificate: G-000012

For more information contact:  
 Ray Dejos  
 Cartographic Tech.  
 (360) 664-1246

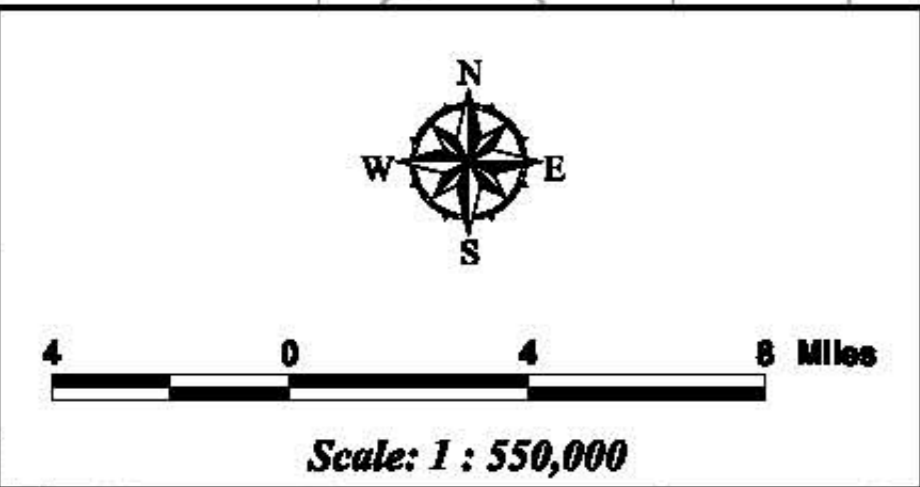
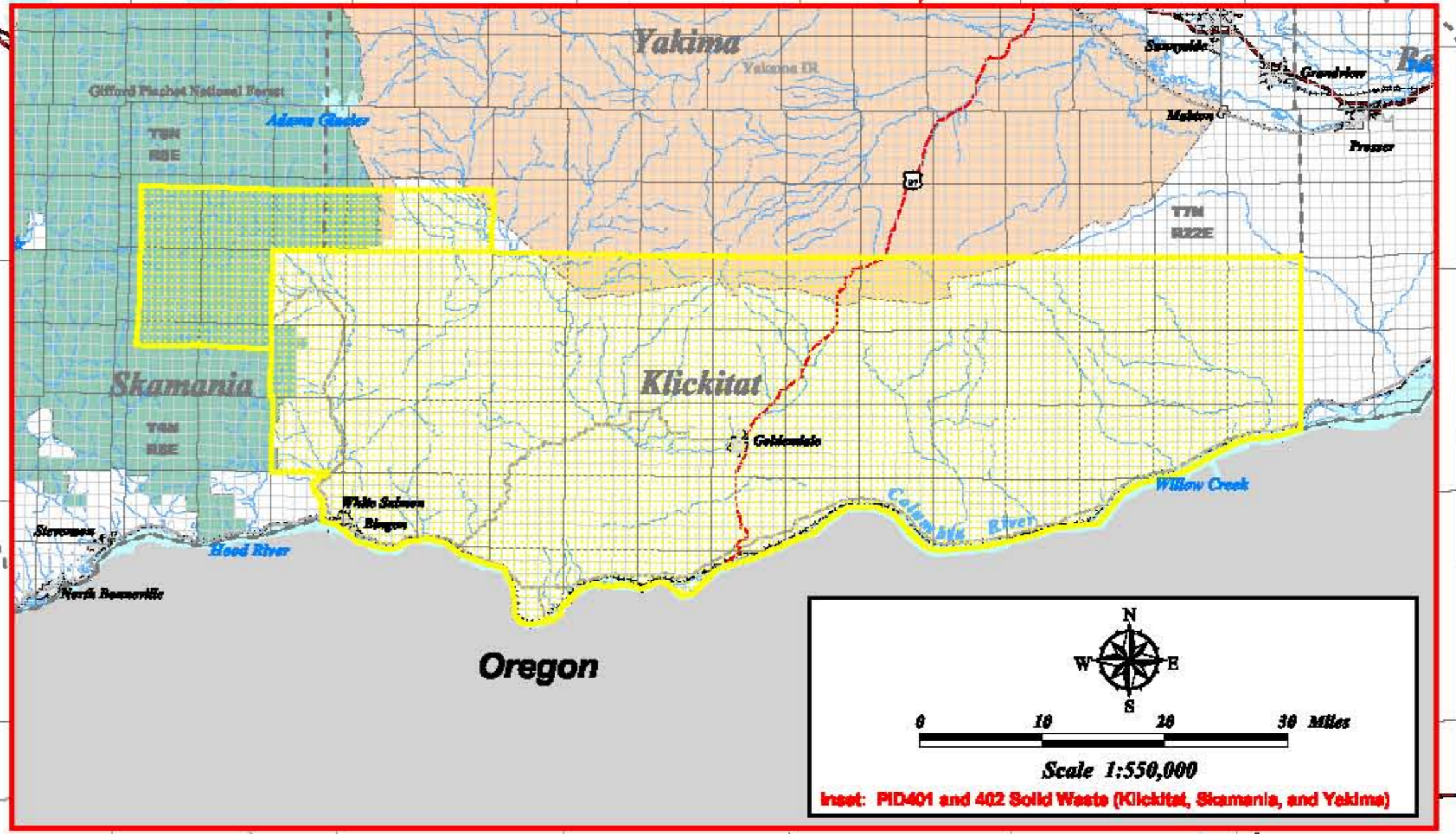
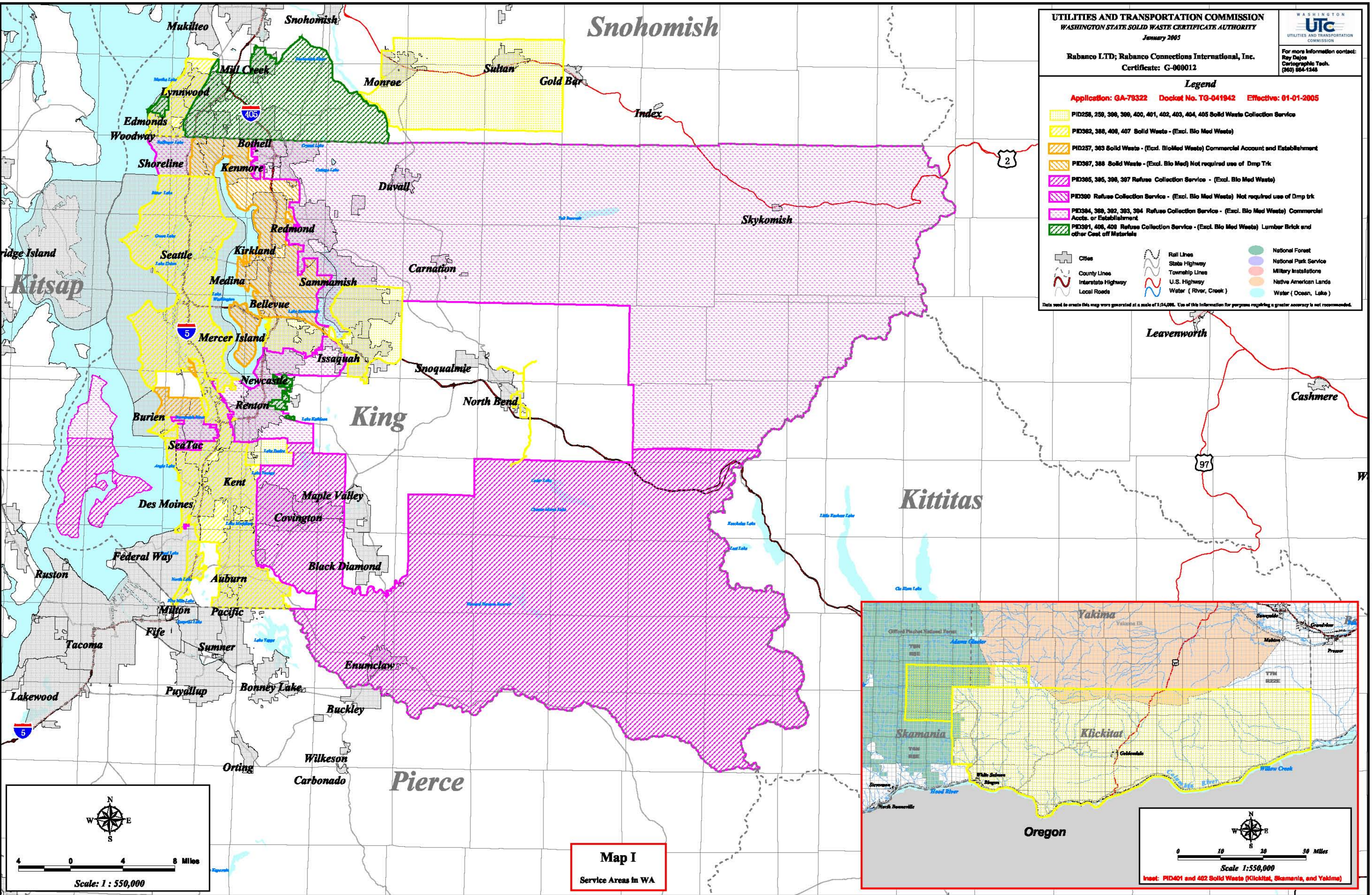
**Legend**

**Application: GA-79322 Docket No. TG-041942 Effective: 01-01-2005**

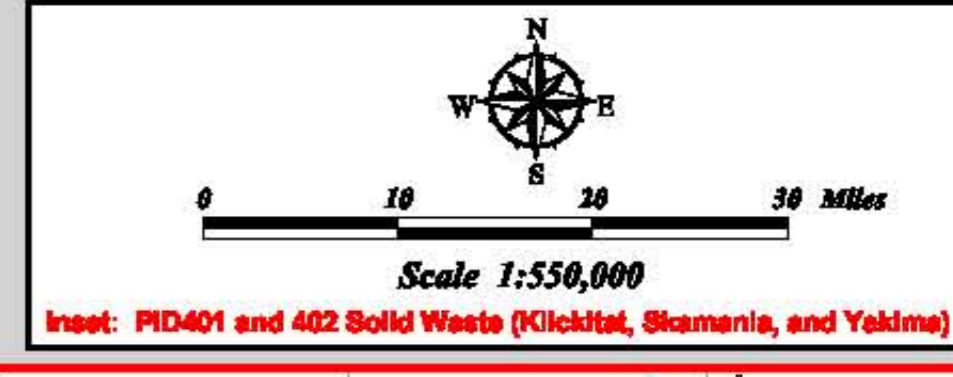
- PID258, 259, 398, 399, 400, 401, 402, 403, 404, 405 Solid Waste Collection Service
- PID382, 388, 408, 407 Solid Waste - (Excl. Bio Med Waste)
- PID257, 363 Solid Waste - (Excl. BioMed Waste) Commercial Account and Establishment
- PID367, 388 Solid Waste - (Excl. Bio Med) Not required use of Dmp Trk
- PID365, 395, 396, 397 Refuse Collection Service - (Excl. Bio Med Waste)
- PID390 Refuse Collection Service - (Excl. Bio Med Waste) Not required use of Dmp trk
- PID394, 399, 392, 393, 394 Refuse Collection Service - (Excl. Bio Med Waste) Commercial Accts. or Establishment
- PID391, 406, 409 Refuse Collection Service - (Excl. Bio Med Waste) Lumber Brk and other Cost off Materials

Cities	Rail Lines	National Forest
County Lines	State Highway	National Park Service
Interstate Highway	Township Lines	Military Installations
Local Roads	U.S. Highway	Native American Lands
	Water ( River, Creek )	Water ( Ocean, Lake )

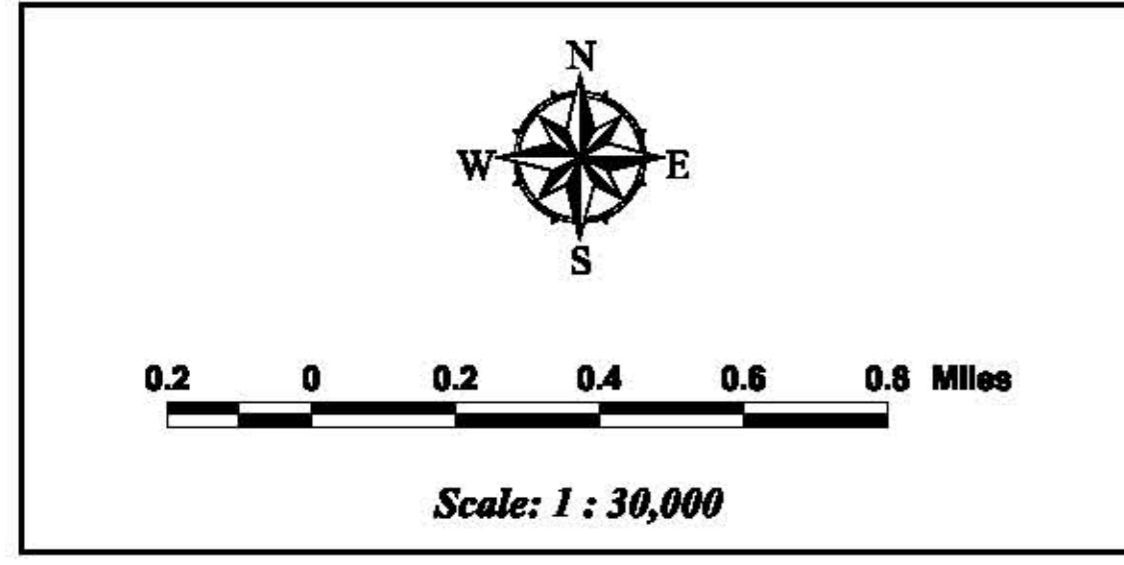
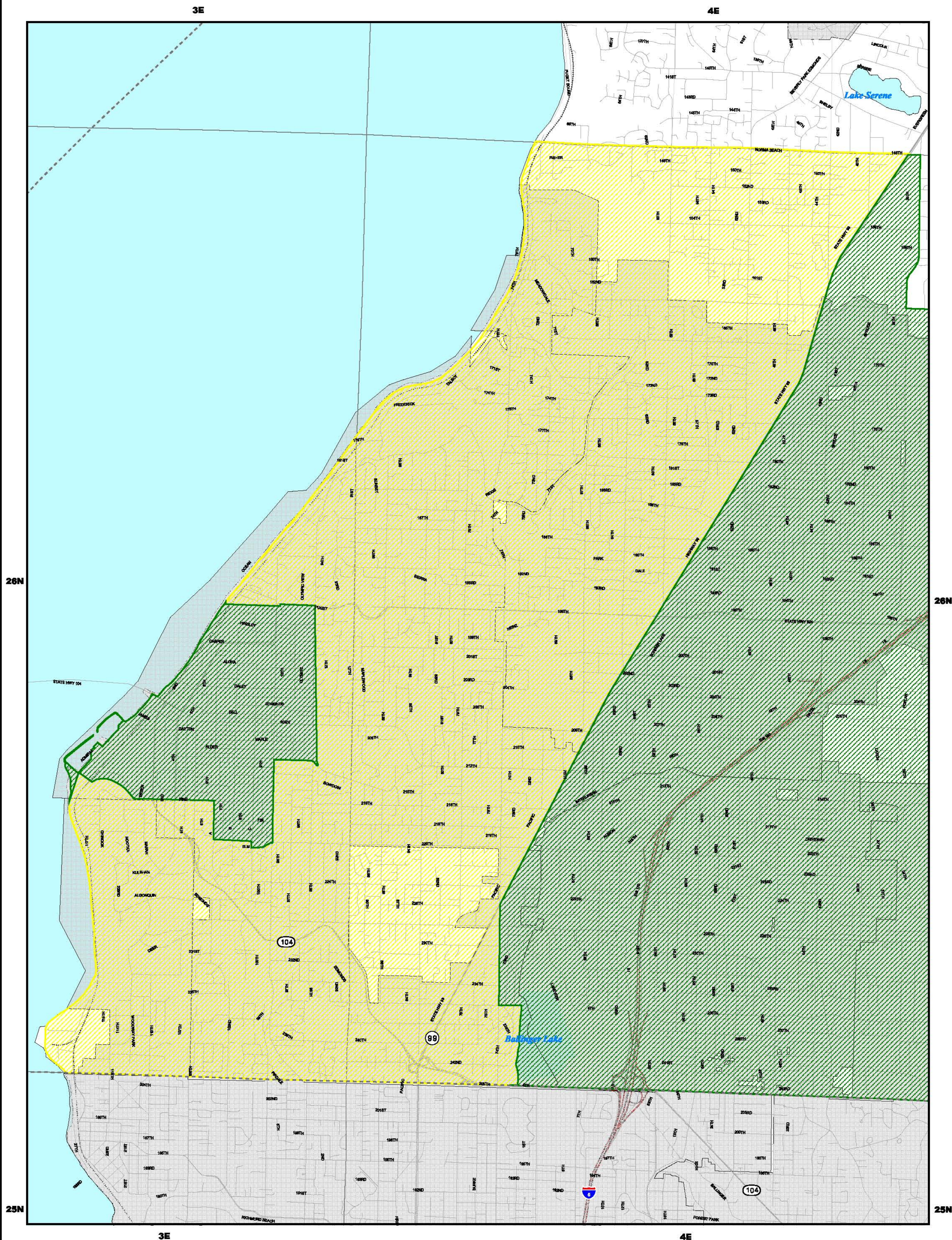
Data used to create this map were generated at a scale of 1:24,000. Use of this information for purposes requiring a greater accuracy is not recommended.



**Map I**  
 Service Areas in WA



R2E R3E R4E R5E R6E R7E R8E R9E R10E R11E R12E R13E R14E R15E R16E R17E R18E R19E



**Map II - A**  
**Snohomish County**

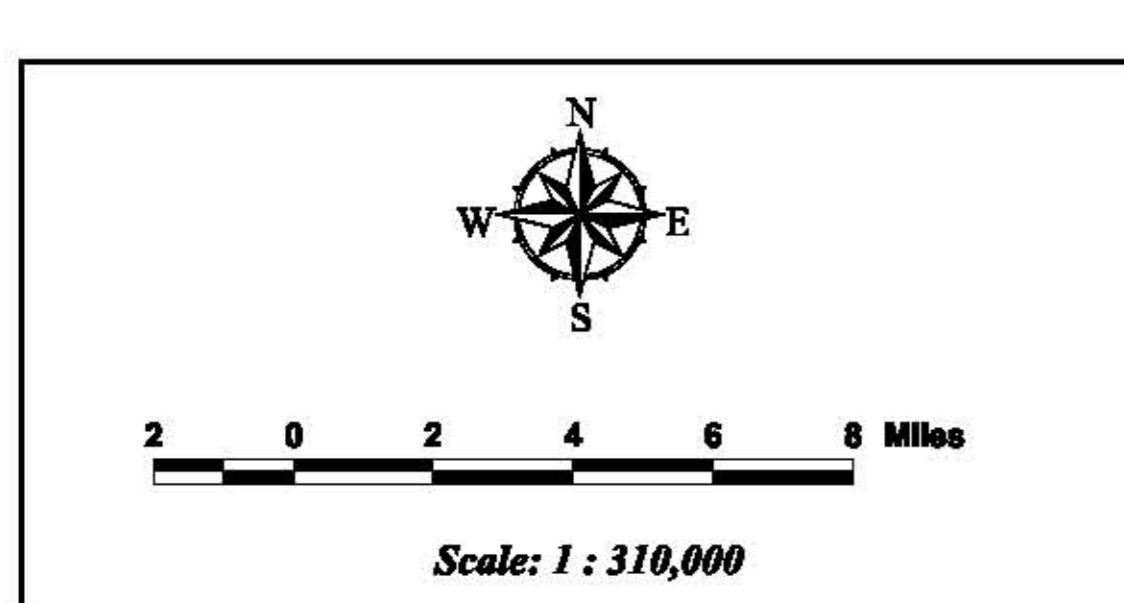
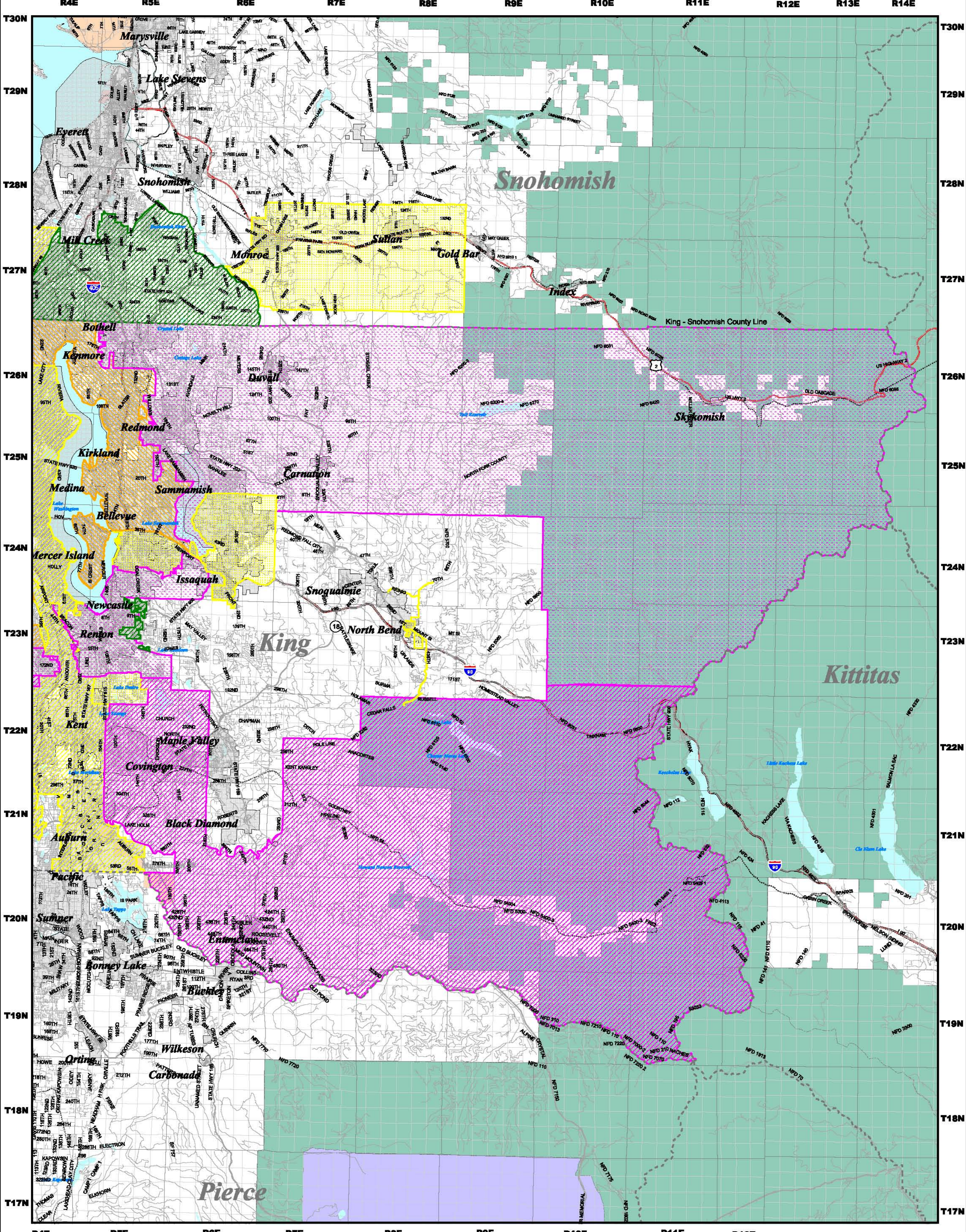
**UTILITIES AND TRANSPORTATION COMMISSION**  
**WASHINGTON STATE SOLID WASTE CERTIFICATE AUTHORITY**  
January 2005

Rabanco LTD; Rabanco Connections International, Inc.  
Certificate: G-000012

**Legend**  
Application No. GA-79322 Docket No. TG041942 Effective: 01-01-2005

- PID406 Solid Waste Collection Service (Excl. Bio Med Waste)
- PID406, 408 Refuse Collection Service - (Excl. Bio Med Waste) Lumber Brick and other Cast off Material
- Cities
- County Lines
- Interstate Highway
- Local Roads
- Rail Lines
- State Highway
- Township Lines
- U.S. Highway
- Water (River, Creek)
- National Forests
- National Parks
- Military Installations
- Native American Lands
- Water (Ocean, Lake)

Data used to create this map were generated at a scale of 1:50,000. Use of this information for purposes requiring a greater accuracy is not recommended.



**Map III - D**  
**King County**

**UTILITIES AND TRANSPORTATION COMMISSION**  
**WASHINGTON STATE SOLID WASTE CERTIFICATE AUTHORITY**  
January 2005

Rabanco LTD; Rabanco Connections International, Inc.  
Certificate: G-000012

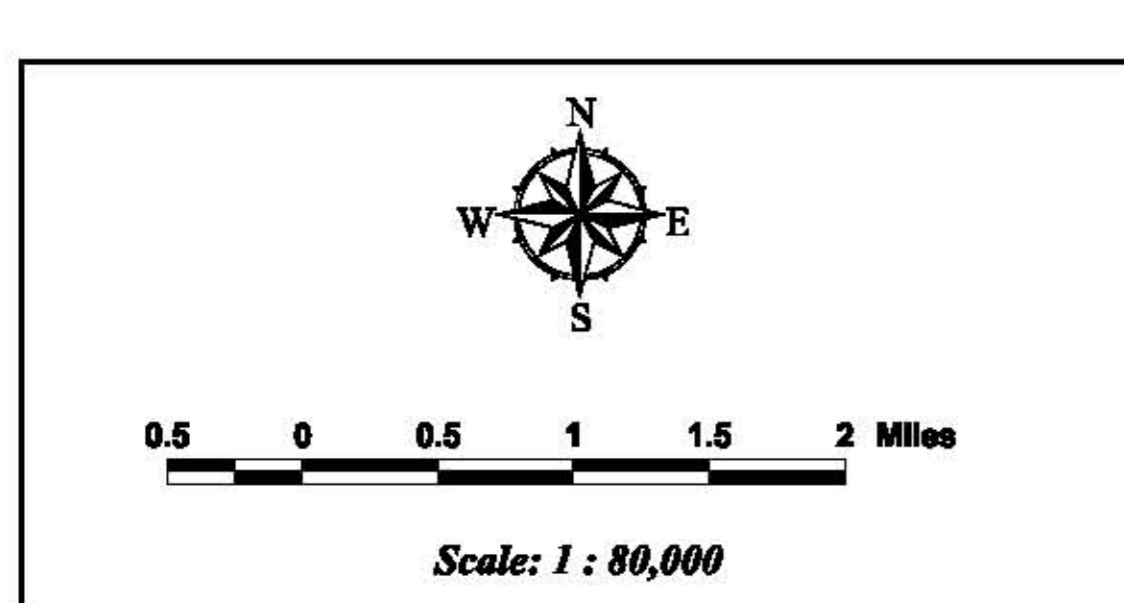
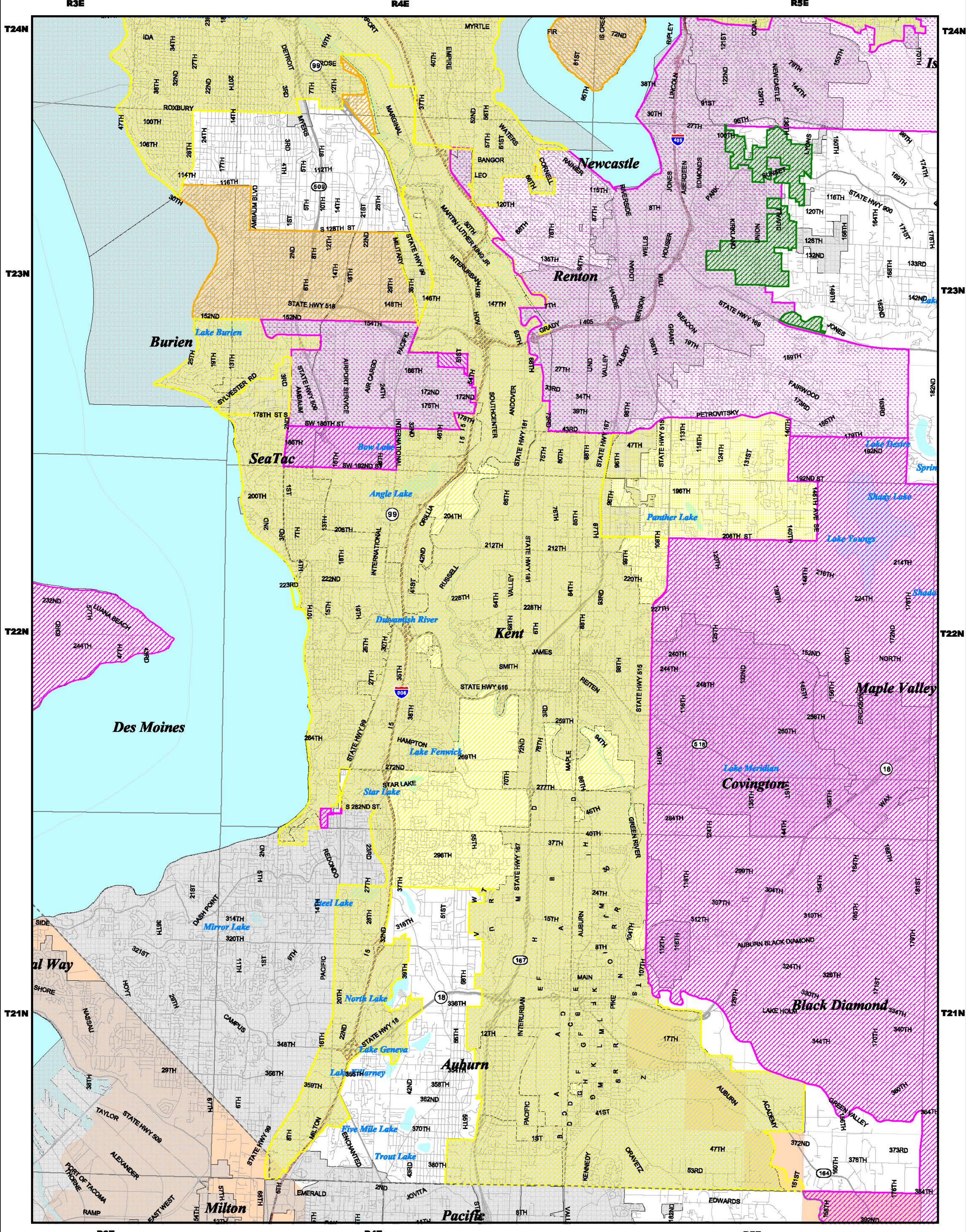
**UTC**  
UTILITIES AND TRANSPORTATION  
COMMISSION  
For more information contact:  
Ray Dales  
Cartographic Tech  
(206) 466-1366

**Legend**

- Application No. GA-79322 District No. TG041942 Effective: 01-01-2005
- PID407 and 382 Solid Waste Collection Service (Excl. Bio Med Waste)
- PID238, 250, 403, 404, and 405 Solid Waste Collection Service (Excl. Bio Med Waste)
- PID388, 392 and 394 Refuse Collection Service - (Excl. Bio Med Waste) Commercial Accts. or Establishment
- PID387 Refuse Collection Service - (Excl. Bio Med Waste)
- PID387 and 398 Solid Waste - (Excl. Bio Med) Not required use of Dump Trk
- PID391, 406, Refuse Collection Service - (Excl. Bio Med Waste) Lumber Brick and other Cast off Material

City	Rail Lines	National Forests
County Lines	State Highway	Military Parks
Interstate Highway	Township Lines	Native American Lands
Local Roads	U.S. Highway	Water (Ocean, Lake)
	Water (River, Creek)	

Data used to create this map were generated at a scale of 1:64,000. Use of this information for purposes requiring a greater accuracy is not recommended.



**Map III - C**  
King County

**UTILITIES AND TRANSPORTATION COMMISSION**  
WASHINGTON STATE SOLID WASTE CERTIFICATE AUTHORITY  
January 2005

Rabanco LTD; Rabanco Connections International, Inc.  
Certificate: G-000012

**Legend**

Application No. GA-79322 Doclet No. TGB41942 Effective: 01-01-2005

- PID382 and 385 Solid Waste Collection Service (Excl. Bio Med Waste)
- PID289 and 389 Solid Waste Collection Service (Excl. Bio Med Waste)
- PID392, 394, Refuse Collection Service - (Excl. Bio Med Waste) Commercial Accts. or Establishment
- PID386 and 396 Refuse Collection Service (Excl. Bio Med Waste)
- PID287 and 383 Solid Waste - (Excl. Bio Med) Not required use of Dump Trk
- PID381, Refuse Collection Service - (Excl. Bio Med Waste) Lumber Brick and other Cast off Material

Cities

County Lines

Interstate Highway

Local Roads

Rail Lines

State Highway

Township Lines

U.S. Highway

Water (River, Creek)

National Forests

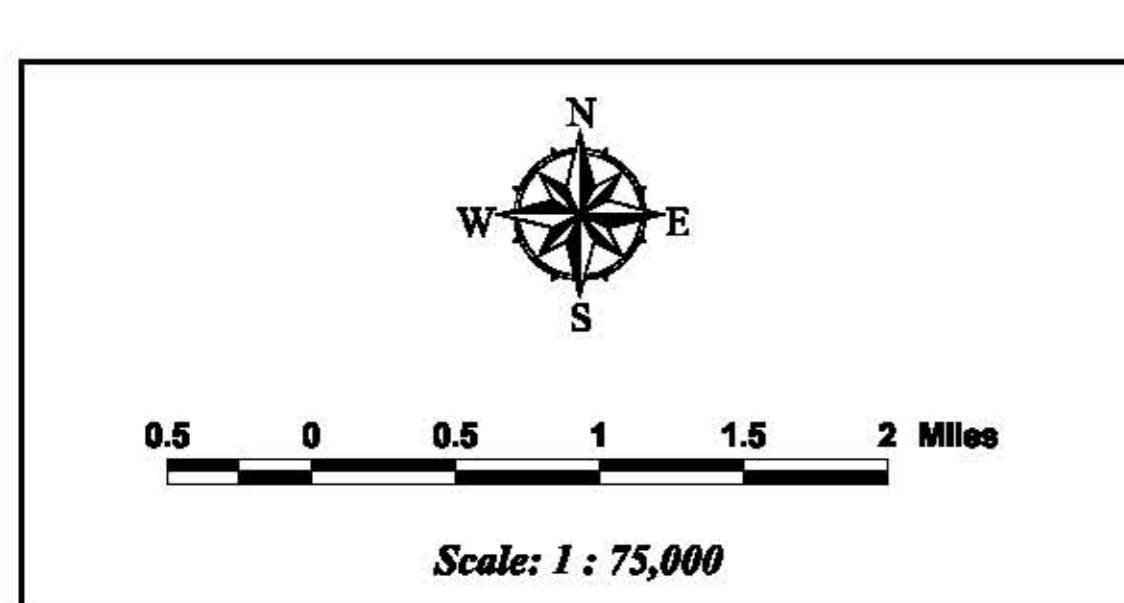
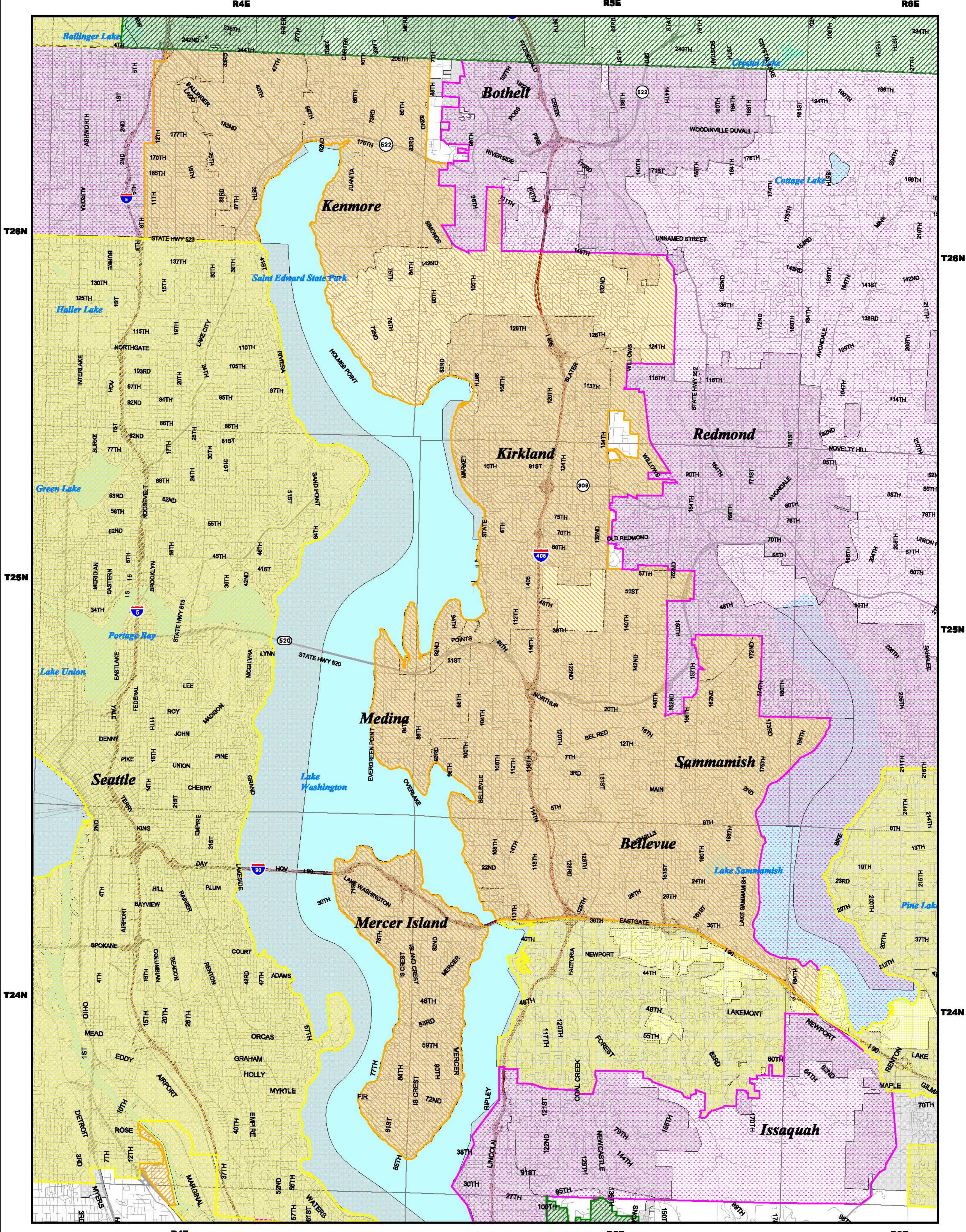
National Parks

Military Installations

Native American Lands

Water (Ocean, Lake)

Data used to create this map were generated at a scale of 1:24,000. Use of this information for purposes requiring a greater accuracy is not recommended.



**Map III - B**  
**King County**

**UTILITIES AND TRANSPORTATION COMMISSION**  
**WASHINGTON STATE SOLID WASTE CERTIFICATE AUTHORITY**  
January 2005

Rabanco LTD; Rabanco Connections International, Inc.  
Certificate: G-000012

**UTC**  
UTILITIES AND TRANSPORTATION  
COMMISSION  
For more information contact:  
Ray Dales  
Cartographic Tech  
(206) 866-1366

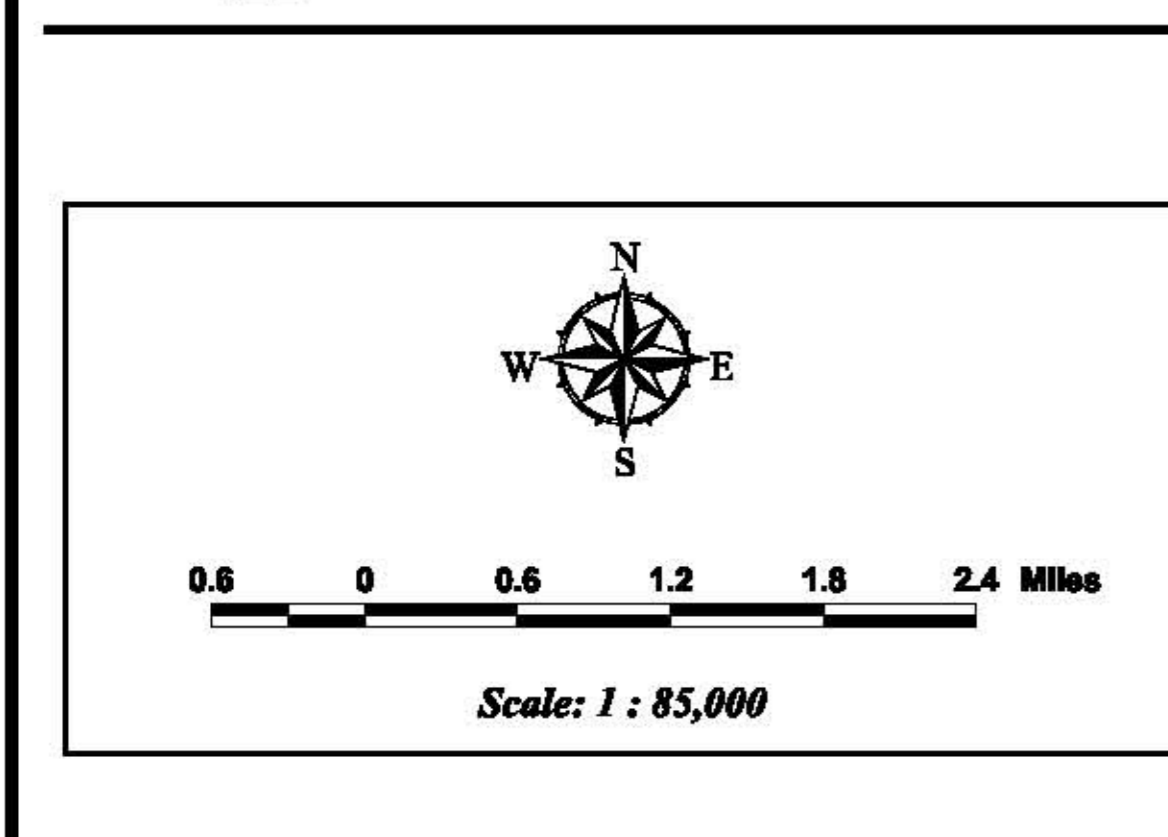
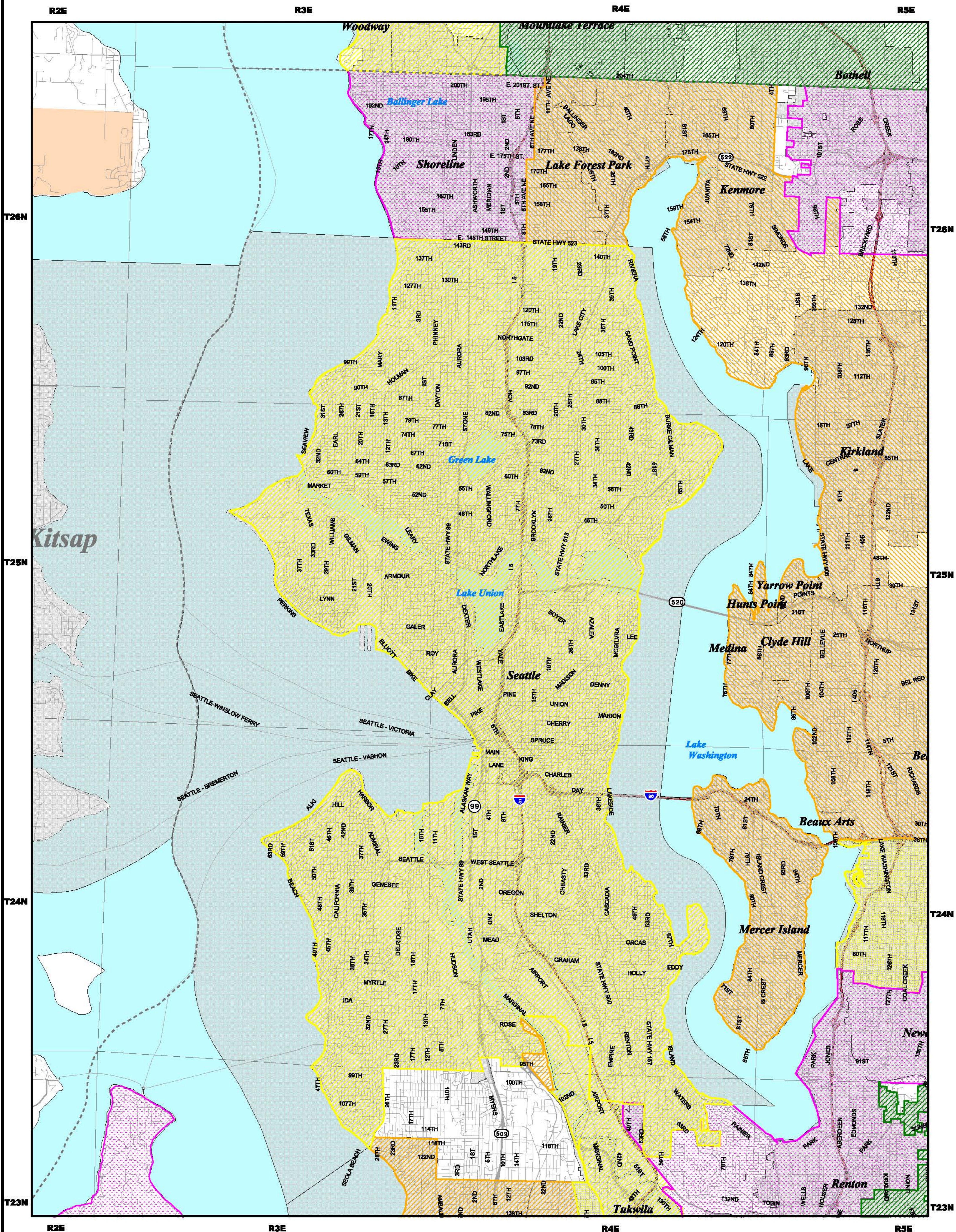
**Legend**

Application No. GA-79322 Docket No. TG041942 Effective: 01-01-2005

- PID407 Solid Waste Collection Service (Excl. Bio Med Waste)
- PID404 and 258 Solid Waste Collection Service (Excl. Bio Med Waste)
- PID384, 388, Refuse Collection Service - (Excl. Bio Med Waste) Commercial Accts. or Establishment
- PID357 and 388 Solid Waste - (Excl. Bio Med) Not required use of Dump Trk
- PID381, 408, Refuse Collection Service - (Excl. Bio Med Waste) Lumber Brick and other Cast off Material

Cities	Rail Lines	National Forests
County Lines	State Highway	National Parks
Interstate Highway	Township Lines	Military Installations
Local Roads	U.S. Highway	Native American Lands
	Water (River, Creek)	Water (Ocean, Lake)

Data used to create this map were generated at a scale of 1:64,000. Use of this information for purposes requiring a greater accuracy is not recommended.



**Map III - A**  
**King County**

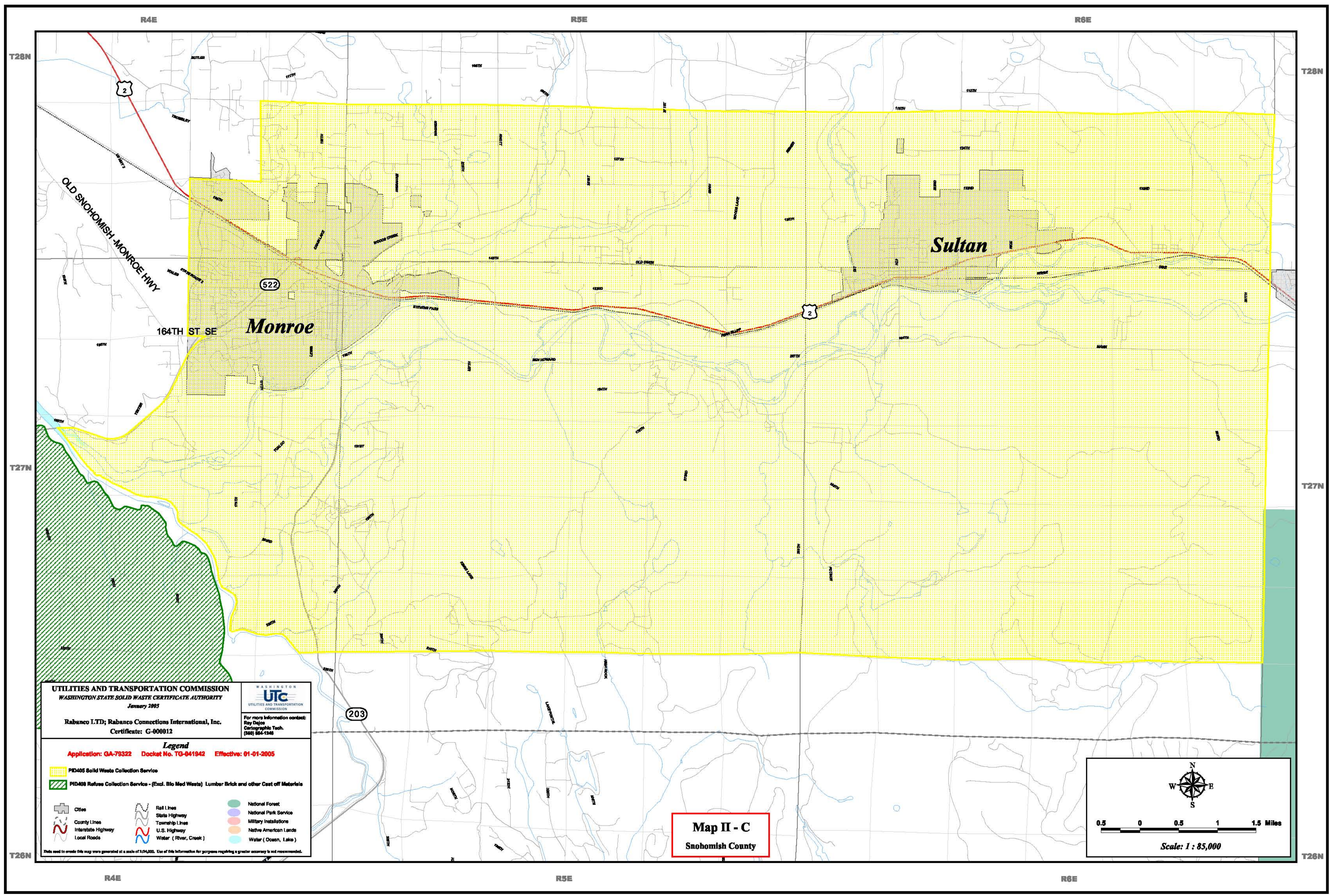
**UTILITIES AND TRANSPORTATION COMMISSION**  
**WASHINGTON STATE SOLID WASTE CERTIFICATE AUTHORITY**  
January 2005

Rabanco LTD; Rabanco Connections International, Inc.  
Certificate: G-000012

**Legend**  
Application No. GA-79322 Docket No. TG041942 Effective: 01-01-2005

- PID382, 406, 407 Solid Waste Collection Service - (Excl. Bio Med Waste)
- PID394, 396, 392 Refuse Collection Service - (Excl. Bio Med Waste) Commercial Accs. or Establishment
- PID387 and 389 Solid Waste - (Excl. Bio Med) Not required use of Dump Trk
- PID257 and 383 Solid Waste - (Commercial Accs.)
- PID301, 406, Refuse Collection Service - (Excl. Bio Med Waste) Lumber Brick and other Cast off Material
- National Forests
- National Parks
- Military Installations
- Native American Lands
- Water ( Ocean, Lake )
- Water ( River, Creek )
- Rail Lines
- State Highway
- Township Lines
- U.S. Highway
- Local Roads

Data used to create this map were generated at a scale of 1:24,000. Use of this information for purposes requiring a greater accuracy is not recommended.



**UTILITIES AND TRANSPORTATION COMMISSION**  
 WASHINGTON STATE SOLID WASTE CERTIFICATE AUTHORITY  
 January 2005  
 Rabanco I.T.D.; Rabanco Connections International, Inc.  
 Certificate: G-000012

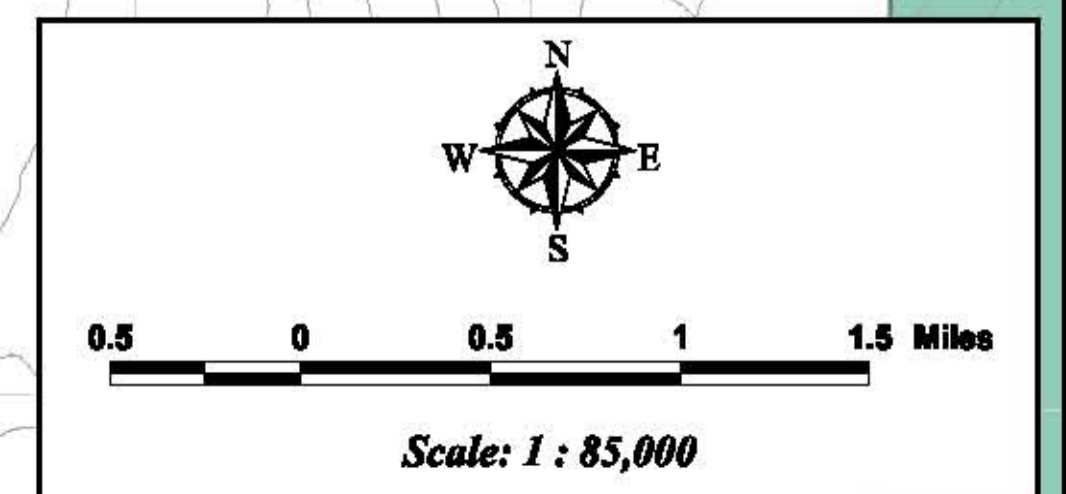
WASHINGTON  
**UTC**  
 UTILITIES AND TRANSPORTATION  
 COMMISSION  
 For more information contact:  
 Ray Dejes  
 Cartographic Tech.  
 (360) 554-1348

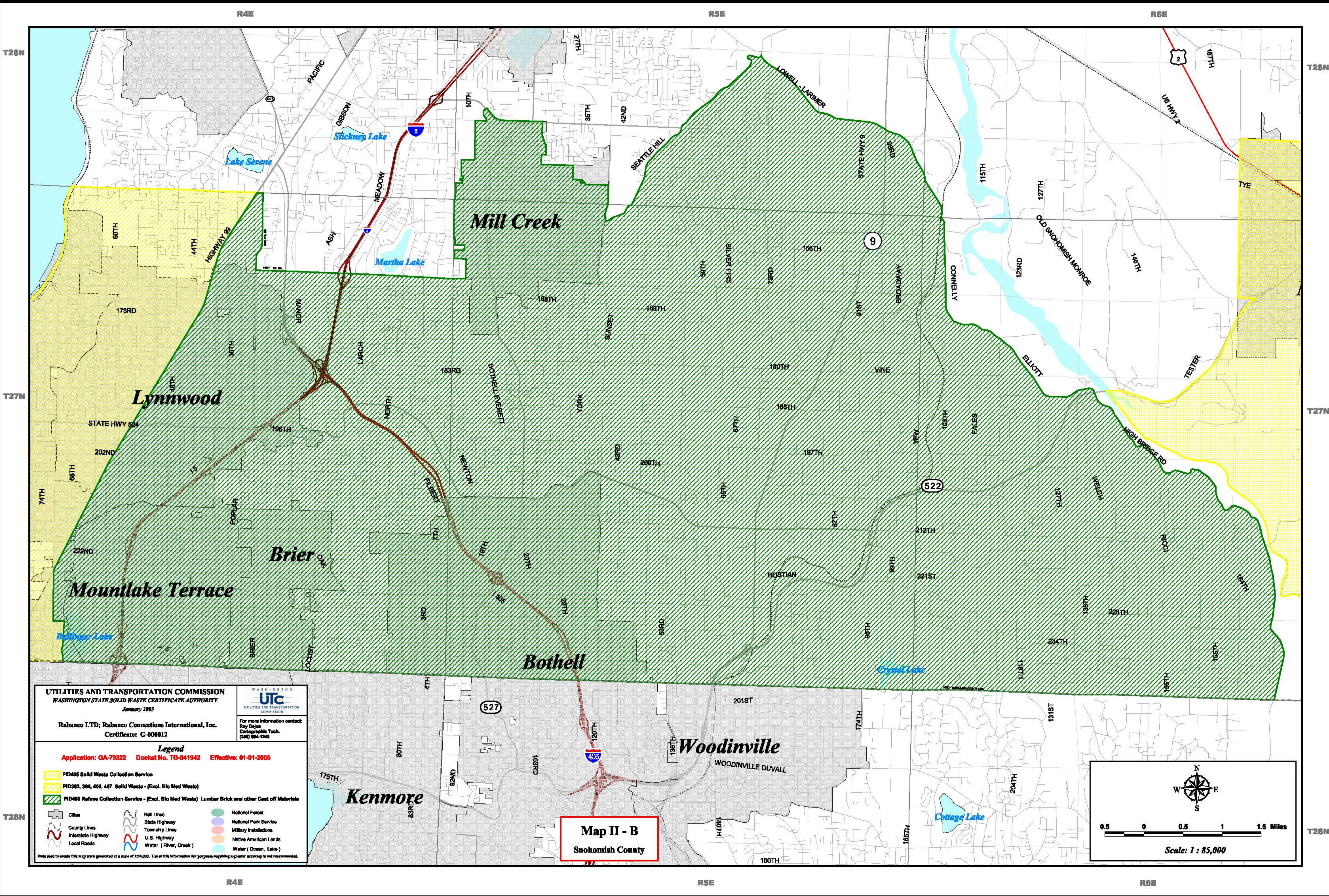
**Legend**  
 Application: GA-79322 Docket No. TG-041942 Effective: 01-01-2005

PID405 Solid Waste Collection Service	PID408 Refuse Collection Service - (Excl. Bio Med Waste) Lumber Brick and other Cast off Materials
Cities	National Forest
County Lines	National Park Service
Interstate Highway	Military Installations
Local Roads	Native American Lands
Rail Lines	Water (Open, Lake)
State Highway	
Township Lines	
U.S. Highway	
Water (River, Creek)	

This used to create this map was generated at a scale of 1:24,000. Use of this information for purposes requiring a greater accuracy is not recommended.

**Map II - C**  
 Snohomish County





**UTILITIES AND TRANSPORTATION COMMISSION**  
 WASHINGTON STATE SOLID WASTE CERTIFICATE AUTHORITY  
 January 2005

Rabanco I.T.D.; Rabanco Connections International, Inc.  
 Certificate: G-000012

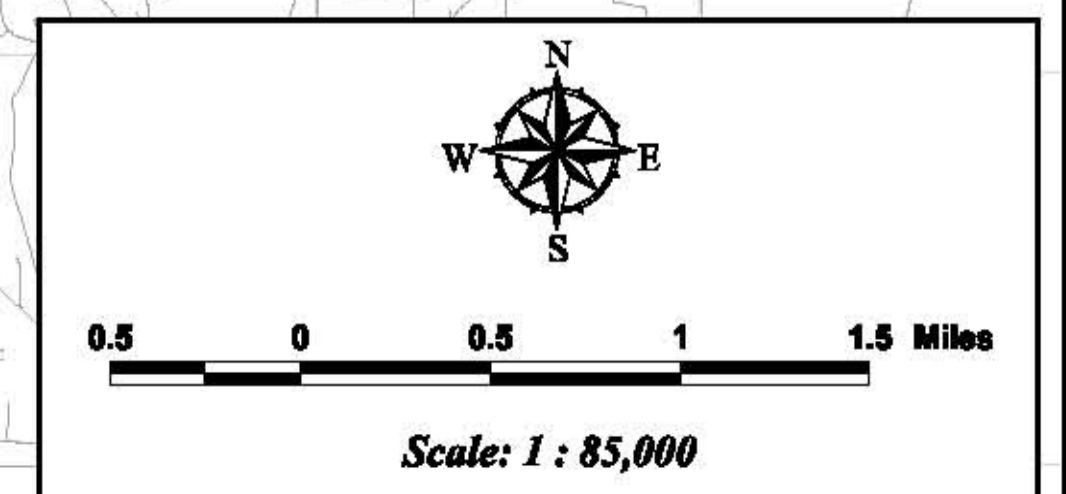
For more information contact:  
 Ray Dajoz  
 Cartographic Tech.  
 (800) 854-1349

**Legend**  
 Application: GA-79322 Docket No. TG-041942 Effective: 01-01-2005

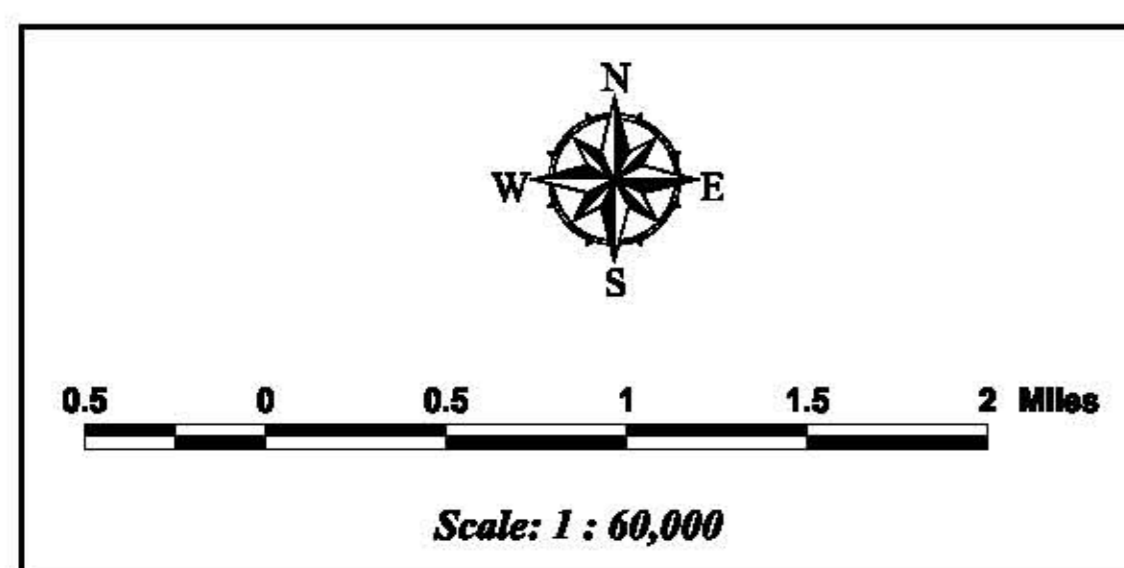
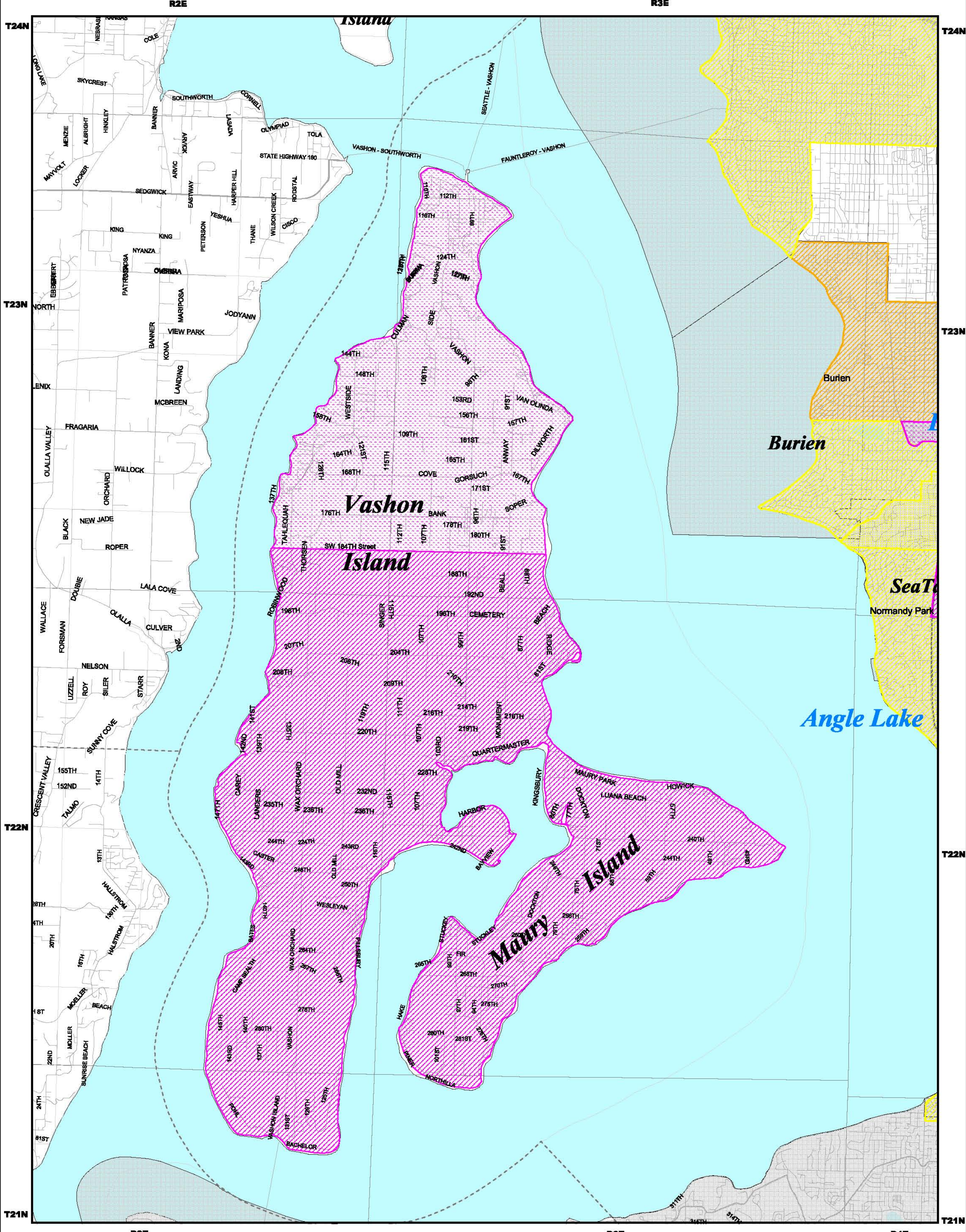
- PID405 Solid Waste Collection Service
- PID382, 386, 406, 407 Solid Waste - (Excl. Bio Med Waste)
- PID408 Refuse Collection Service - (Excl. Bio Med Waste) Lumber Brick and other Cast off Materials
- Cities
- County Lines
- Interstate Highway
- Local Roads
- Rail Line
- State Highway
- Township Lines
- U.S. Highway
- Water (River, Creek)
- National Forest
- National Park Service
- Military Installations
- Native American Lands
- Water (Ocean, Lake)

This map or any part hereof was generated at a scale of 1:24,000. Use of this information for purposes requiring a greater accuracy is not recommended.

**Map II - B**  
 Snohomish County







**Map III - E**  
**King County**

**UTILITIES AND TRANSPORTATION COMMISSION**  
**WASHINGTON STATE SOLID WASTE CERTIFICATE AUTHORITY**  
 January 2005  
 Rabanco LTD; Rabanco Connections International, Inc.  
 Certificate: G-00012

  
For more information contact:  
Ray Dales  
Cartographic Tech  
(206) 466-1366

**Legend**

Application No. GA-79322 Docket No. TG041942 Effective: 01-01-2005

- PID382, 386, and 407 Solid Waste Collection Service (Excl. Bio Med Waste)
- PID383 Refuse Collection Service - (Excl. Bio Med Waste) Commercial Accts. or Establishment
- PID385 Refuse Collection Service - (Excl. Bio Med)
- PID383 Solid Waste - (Excl. Bio Med) Not required use of Dump Truck

 Cities	 Rail Lines	 National Forests
 County Lines	 State Highway	 Military Parks
 Interstate Highway	 Township Lines	 Native American Lands
 Local Roads	 U.S. Highway	 Water (River, Creek)
	 Water (Ocean, Lake)	

Data used to create this map were generated at a scale of 1:64,800. Use of this information for purposes requiring a greater accuracy is not recommended.